

**PRE-LAUNCH**

*Mystic Waves*

**STUDIO - 1, 2 & 3 BHK**

**CALANGUTE - GOA**

*The Project - Calangute, Goa, though secluded but at a walking distance from Tito's Club, and other happening places in North Goa.*

*Calangute-Baga Beach, due to its sheer size and popularity, it is a hub for tourists and backpackers from all over the world. Popular as the "Queen of Beaches", the Calangute Beach of Goa is among the top ten beaches in the world.*

*The project has been meticulously designed, keeping in mind, aesthetics, liveability, accessibility and serenity. We have four main configurations to offer; studio, one-bhk, two-bhk & three-bhk, all facing the scrupulous amenities of the project.*















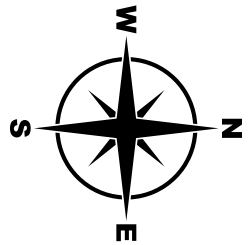
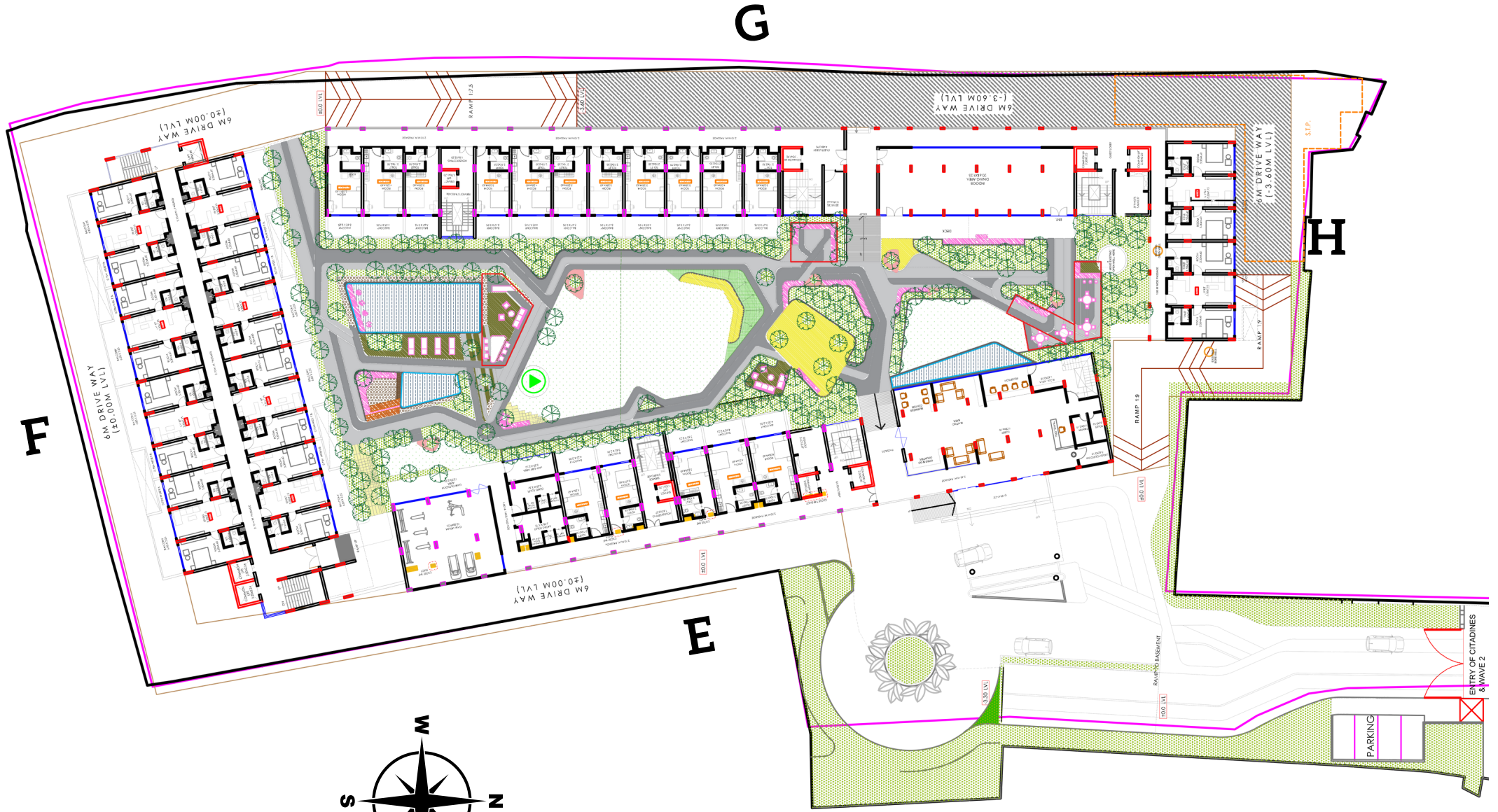




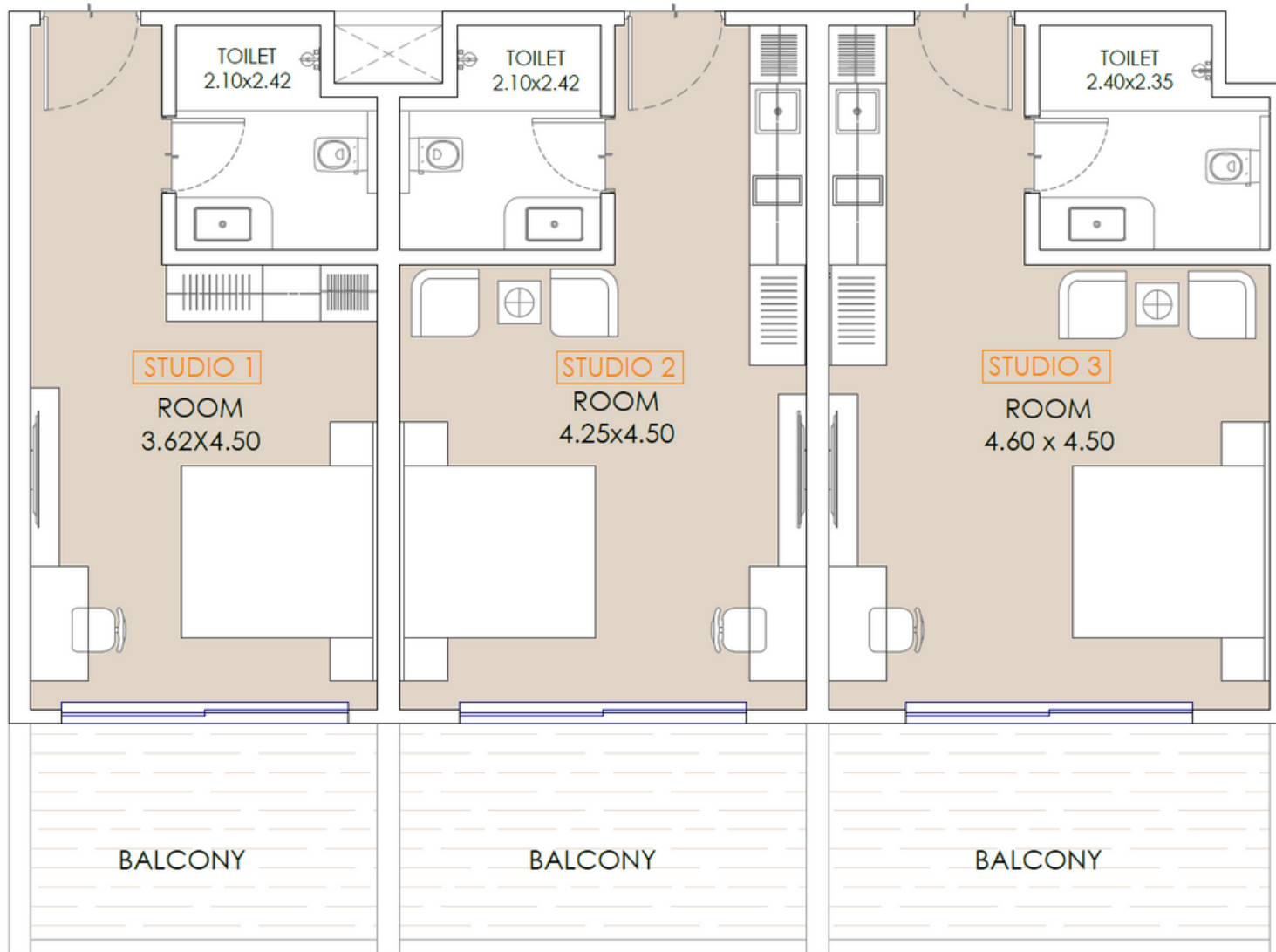








# STUDIO APARTMENTS TYPICAL LAYOUT



## STUDIO-1

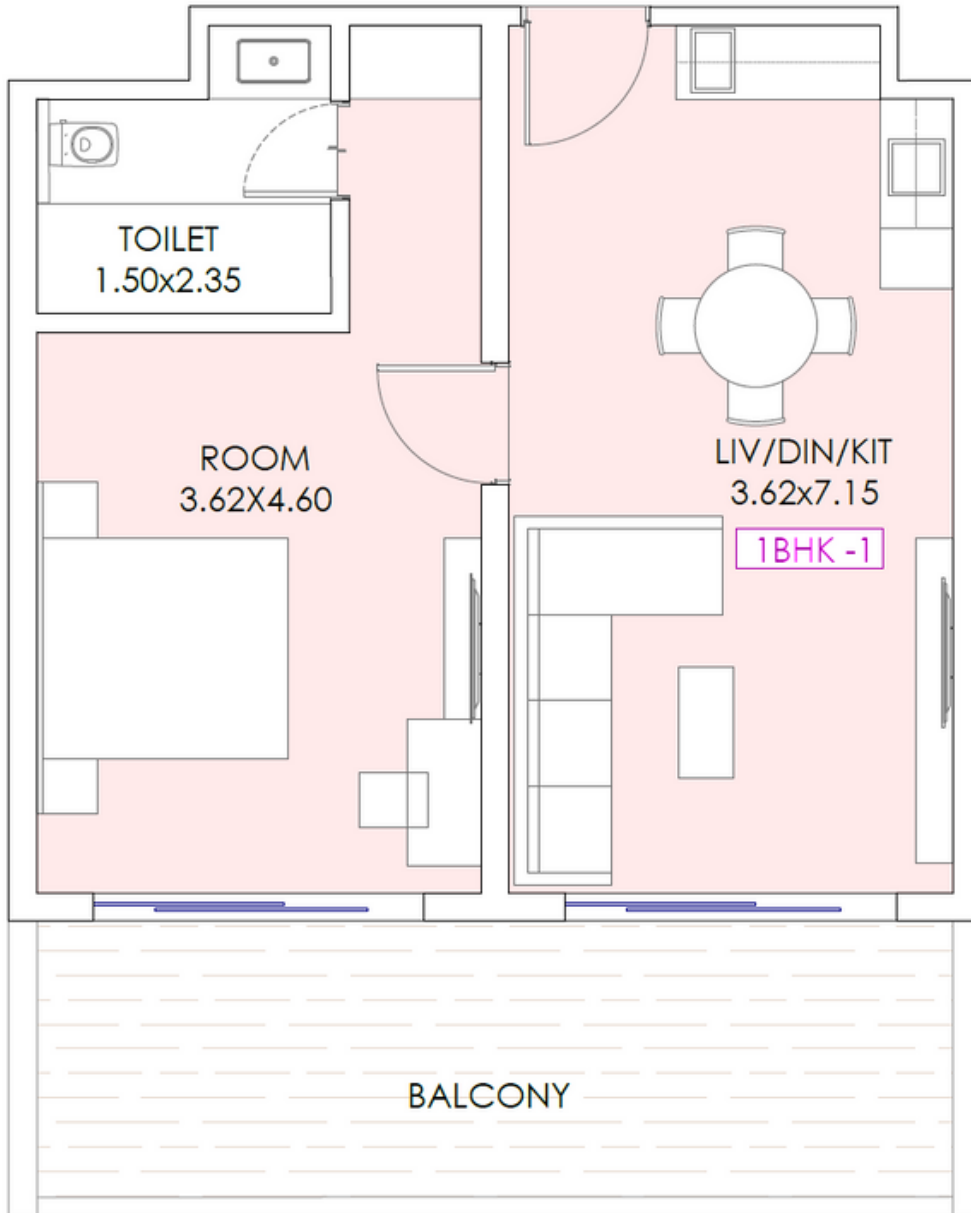
Usable Area: 361.76 sq.ft.  
Chargeable Area: 506.46 sq.ft.

## STUDIO-2

Usable Area - 425.60 sq.ft.  
Chargeable Area - 595.84 sq.ft.

## STUDIO-3

Usable Area: 460.47 sq.ft.  
Chargeable Area: 644.65 sq.ft.



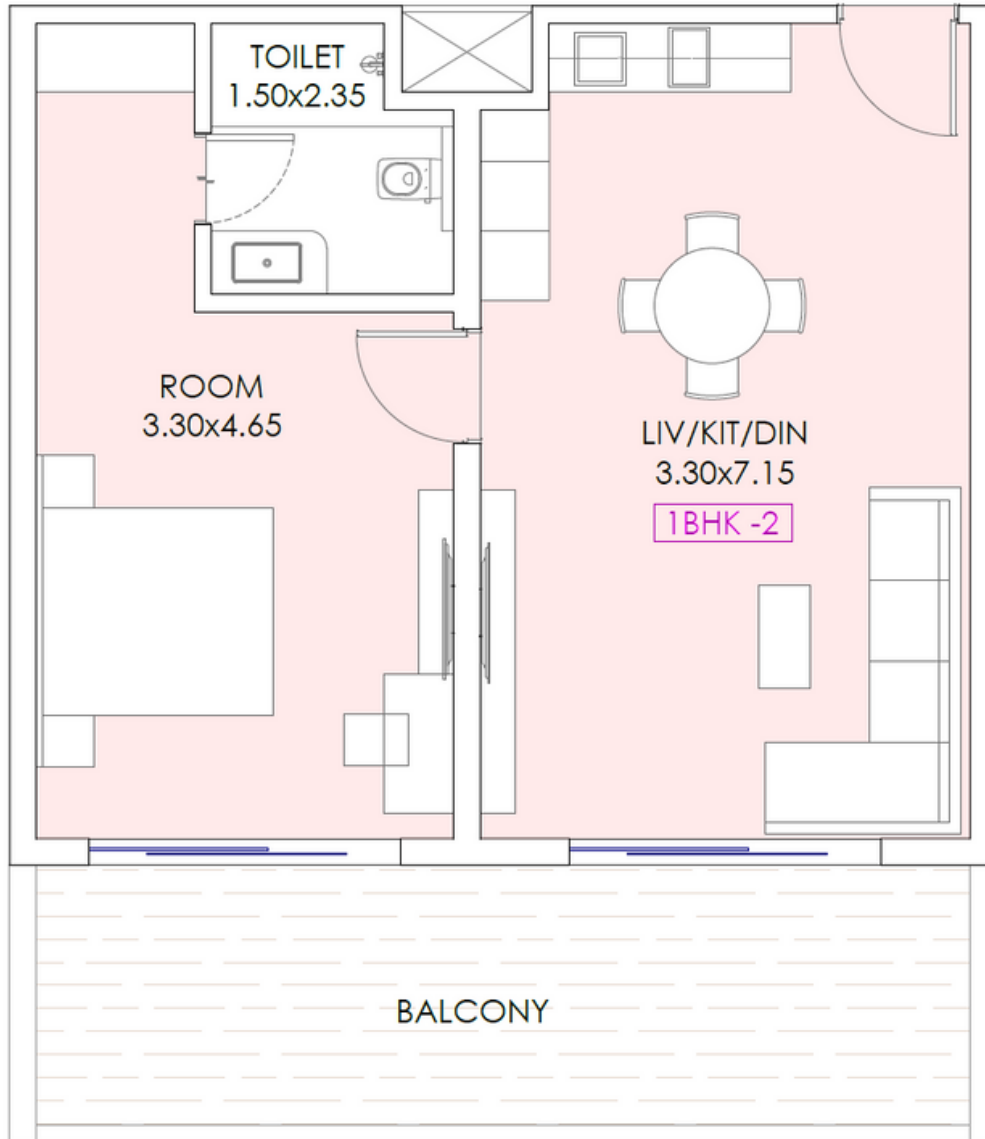
**ONE BHK  
(TYPE 1)  
TYPICAL LAYOUT**

**1BHK-1**

**Usable Area: 729.58 sq.ft.**

**Chargeable Area: 1021.42 sq.ft.**

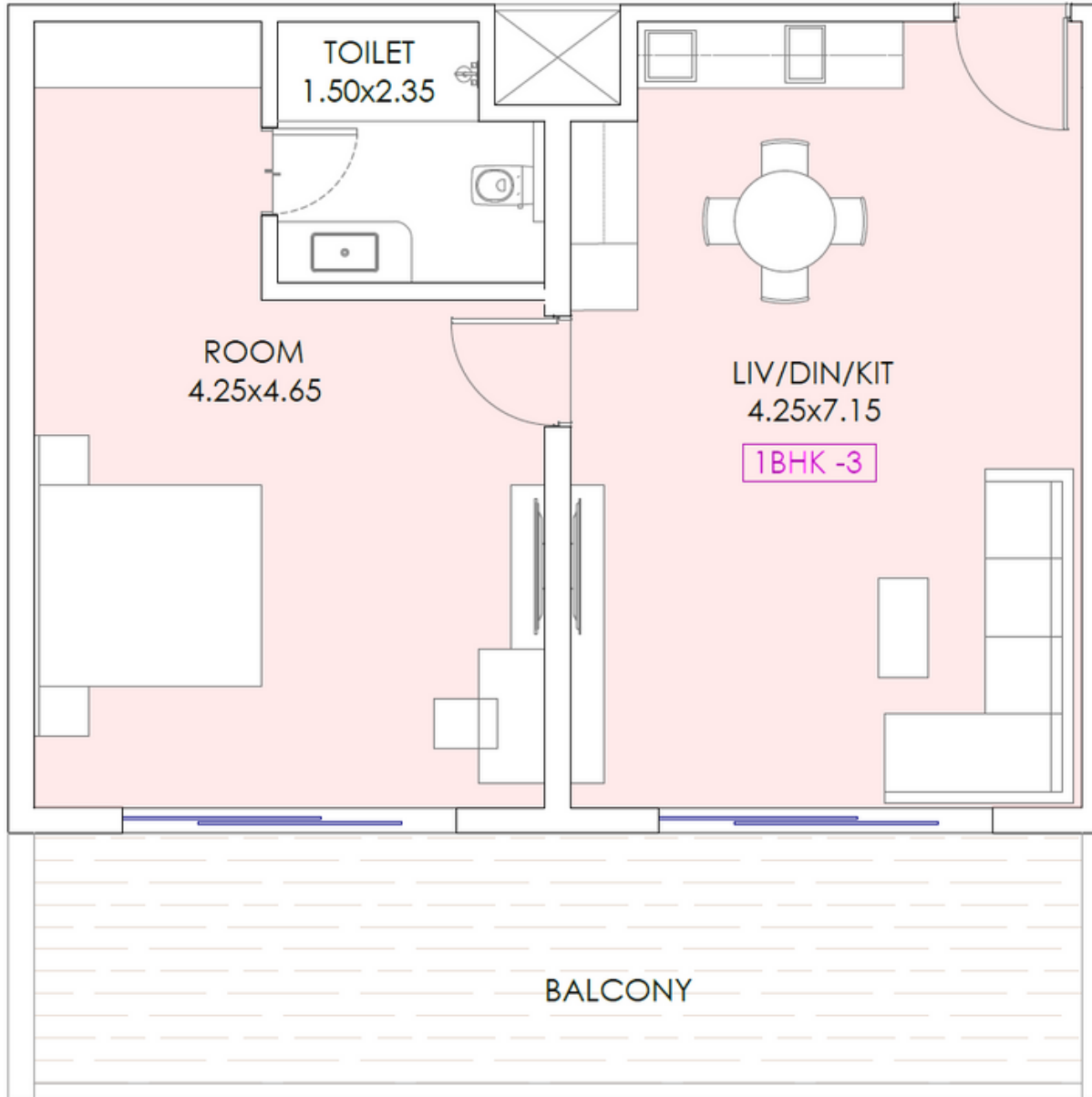




**ONE BHK  
(TYPE 2)  
TYPICAL LAYOUT**

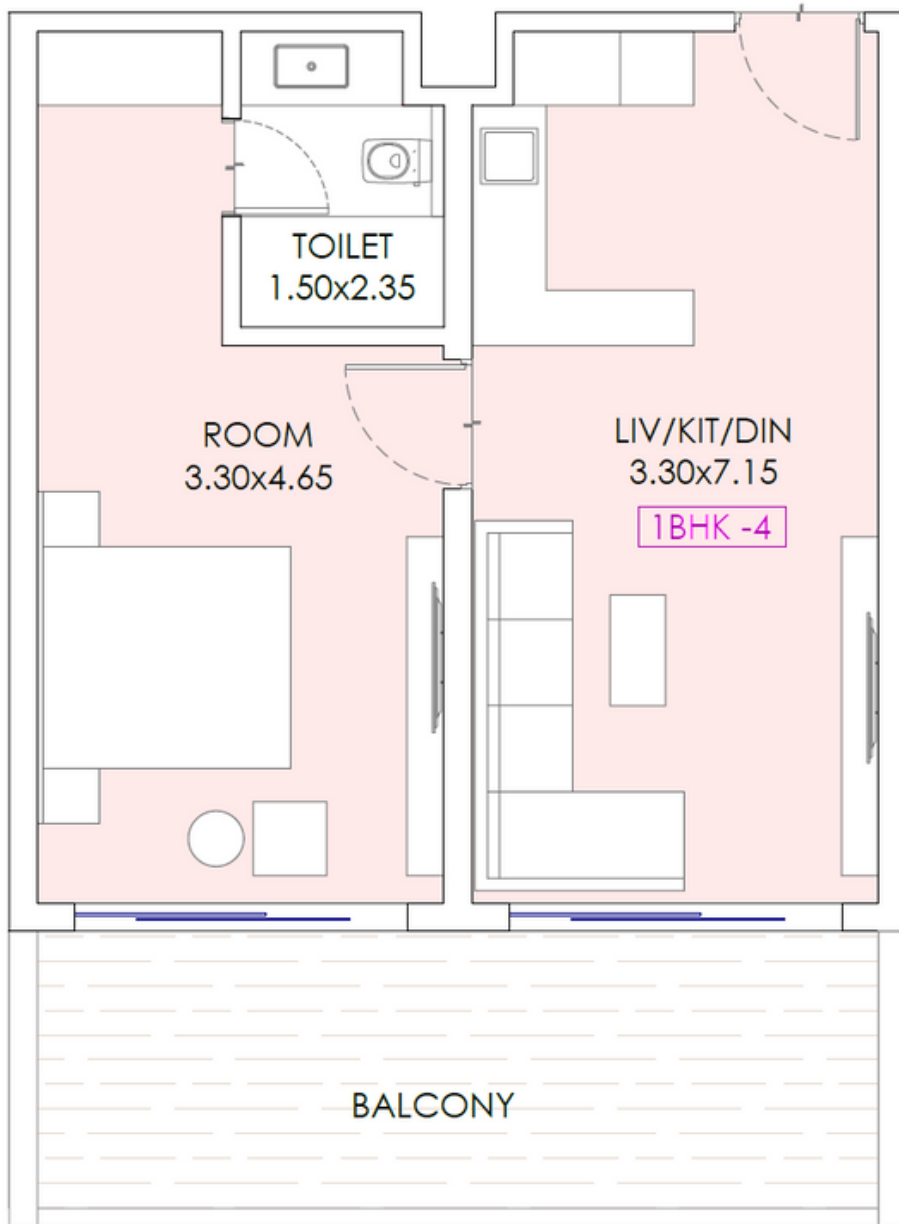
**1BHK-2**

**Usable Area: 796.86 sq.ft.  
Chargeable Area: 1115.60 sq.ft.**



**ONE BHK**  
**(TYPE 3)**  
**TYPICAL LAYOUT**

**1BHK-3**  
**Usable Area: 929.15 sq.ft.**  
**Chargeable Area: 1300.81 sq.ft.**

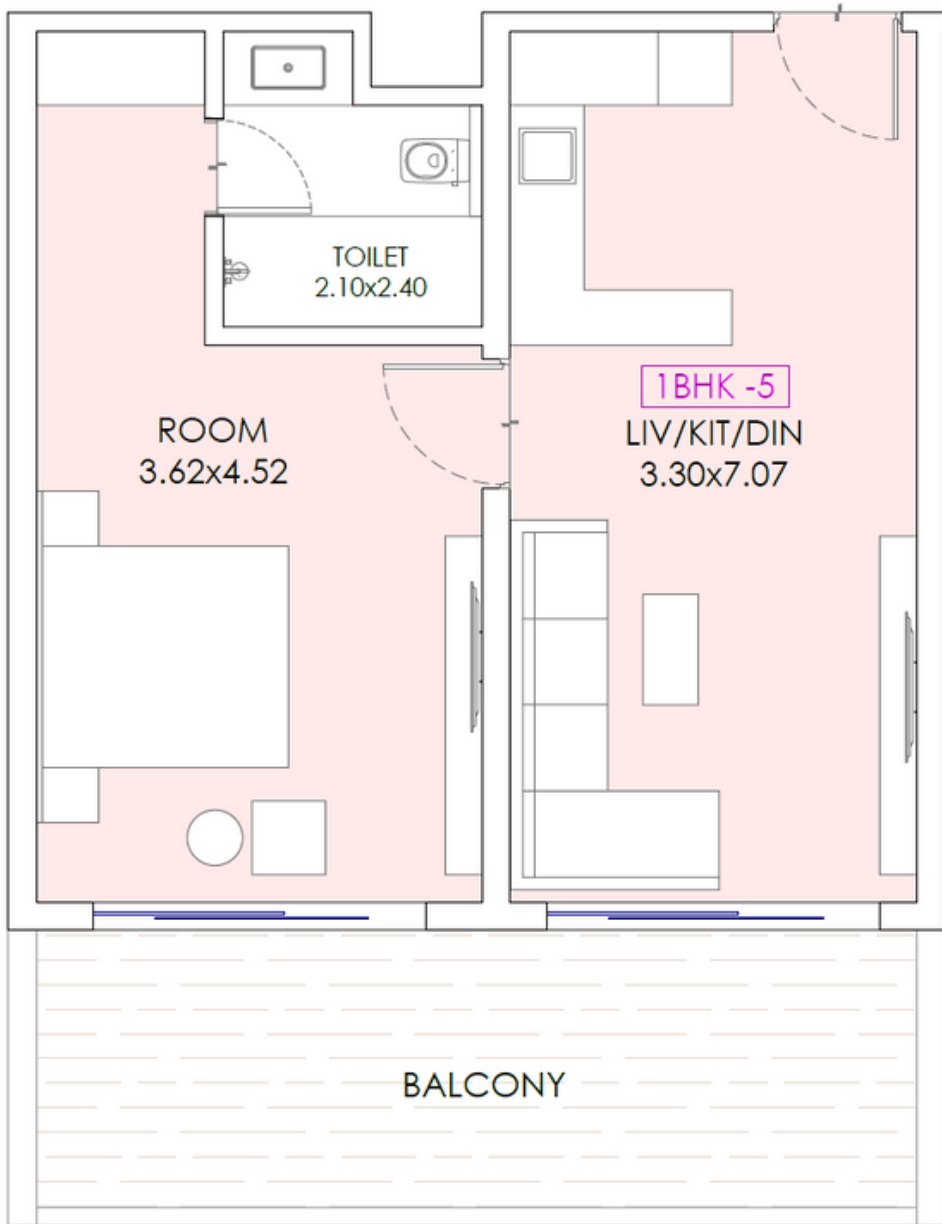


**ONE BHK  
(TYPE 4)  
TYPICAL LAYOUT**

**1BHK-4**

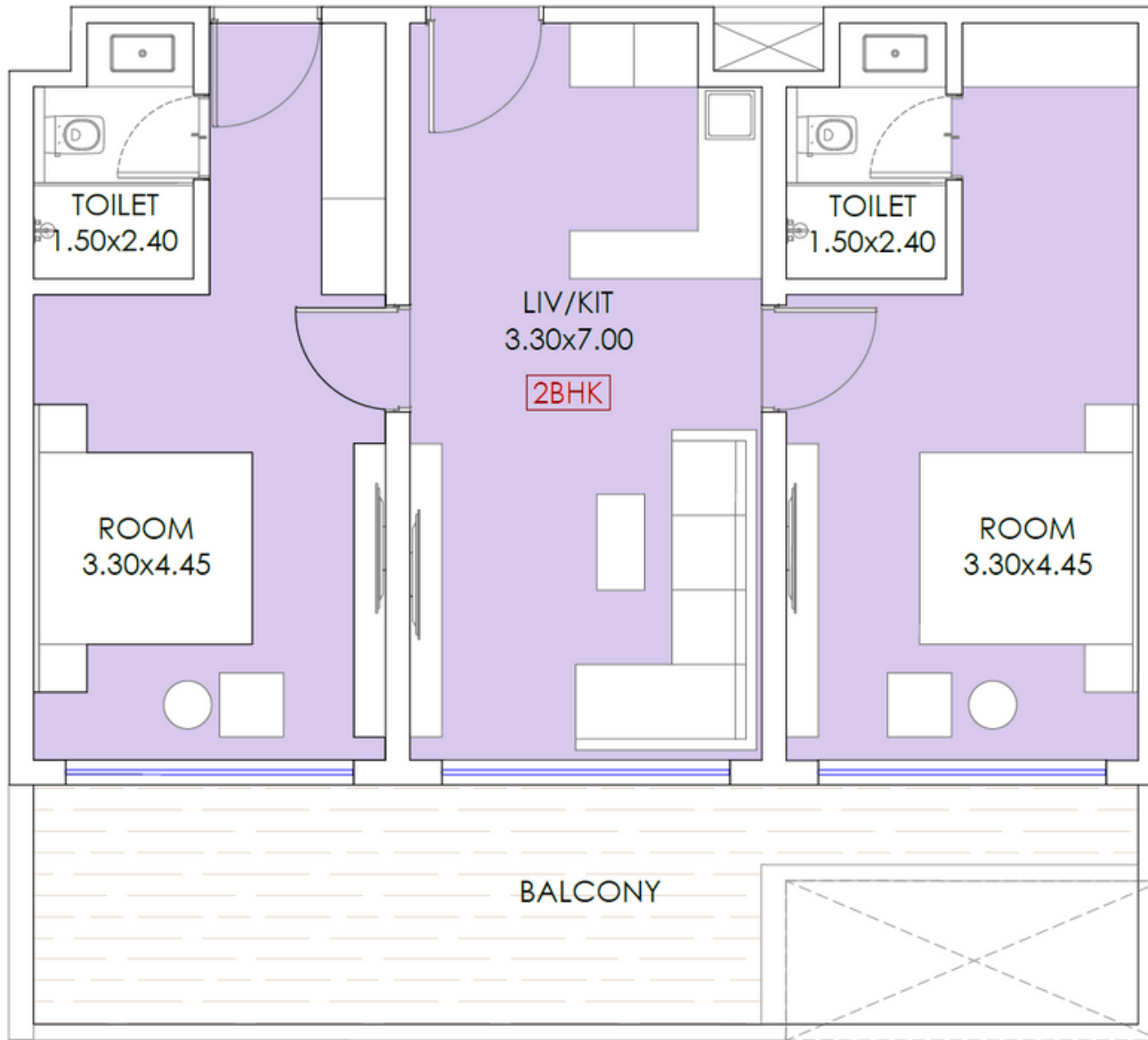
**Usable Area: 675.43 sq.ft.**

**Chargeable Area: 945.60 sq.ft.**



**ONE BHK  
(TYPE 5)  
TYPICAL LAYOUT**

**1BHK-5**  
Usable Area: 704.60 sq.ft.  
Chargeable Area: 986.44 sq.ft.

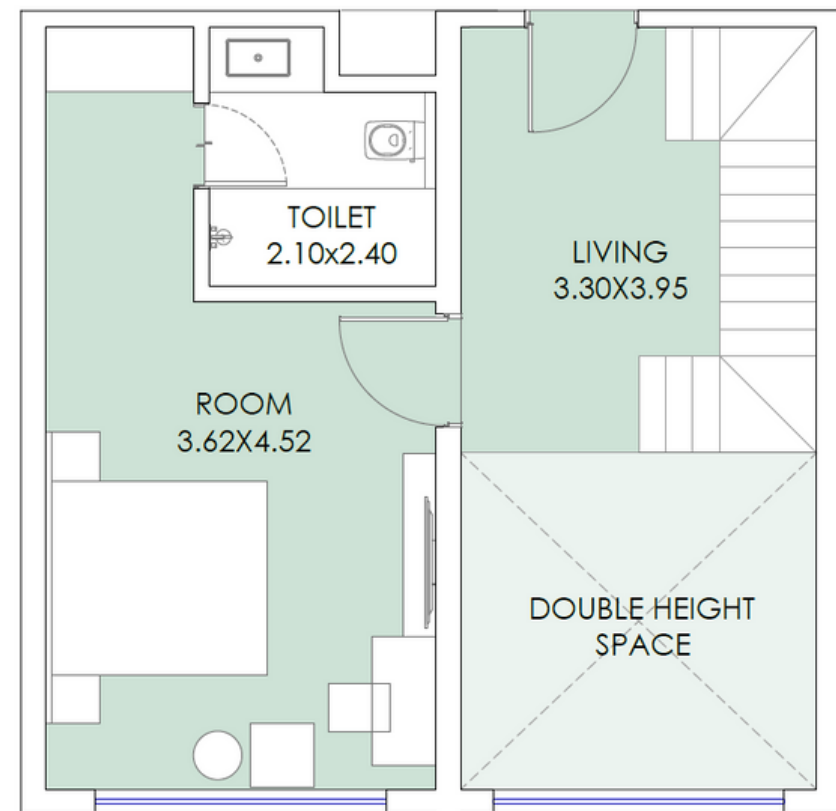
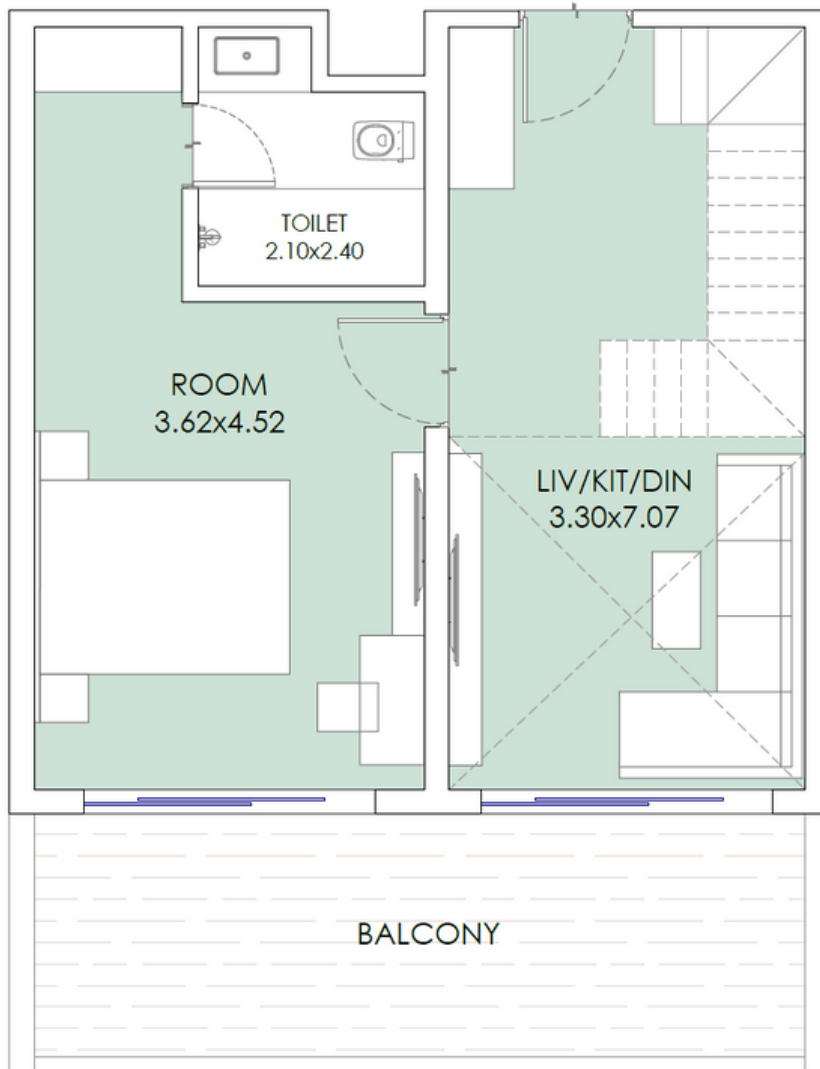


**TWO BHK  
TYPICAL LAYOUT**

**2BHK**

**Usable Area: 995.88 sq.ft.  
Chargeable Area: 1394.23 sq.ft.**

## TWO BHK - DUPLEX (Type1) - TYPICAL LAYOUT

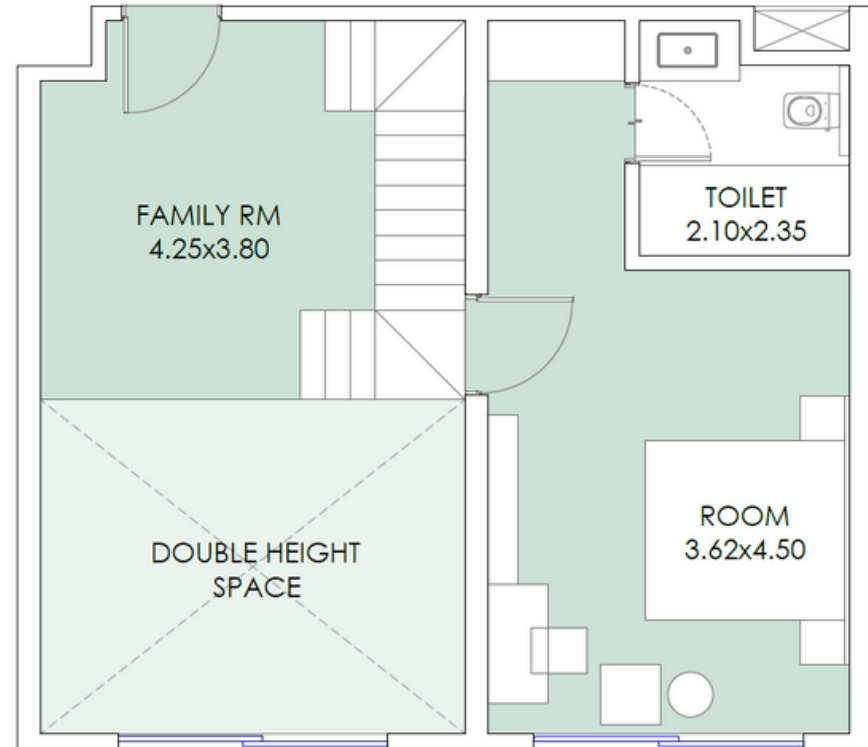
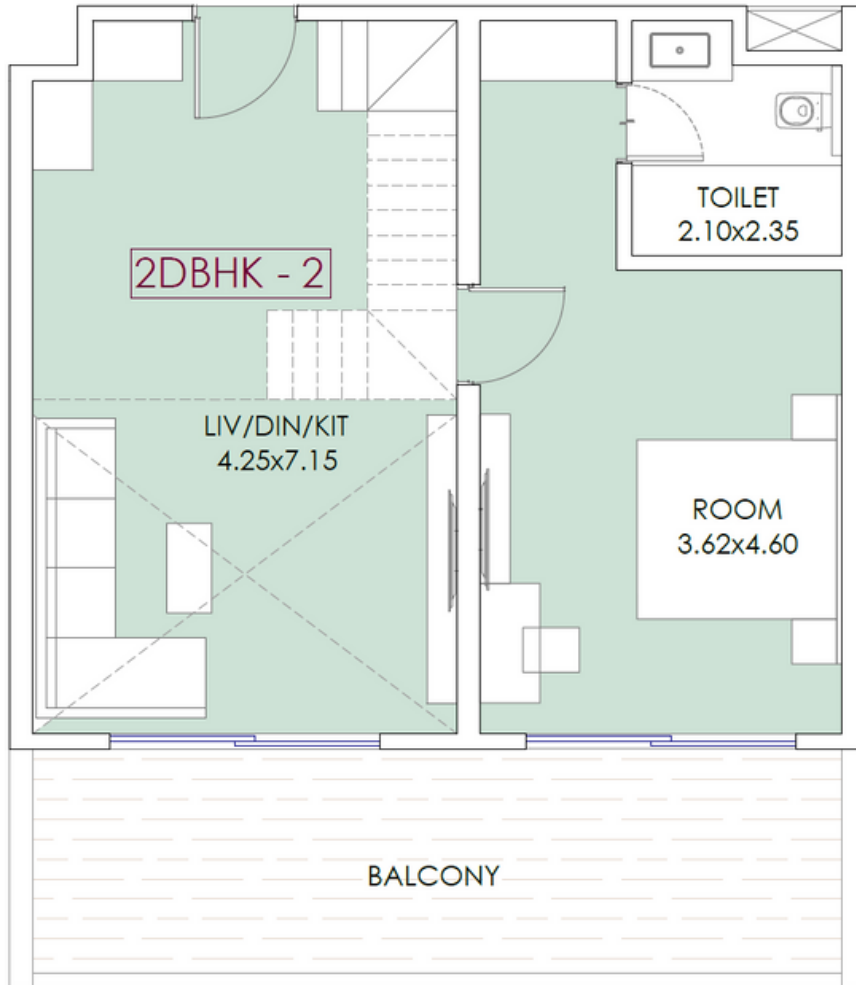


**2DBHK-1**

**Usable Area: 1235.81 sq.ft.**

**Chargeable Area: 1730.13 sq.ft.**

## TWO BHK - DUPLEX (Type2) - TYPICAL LAYOUT

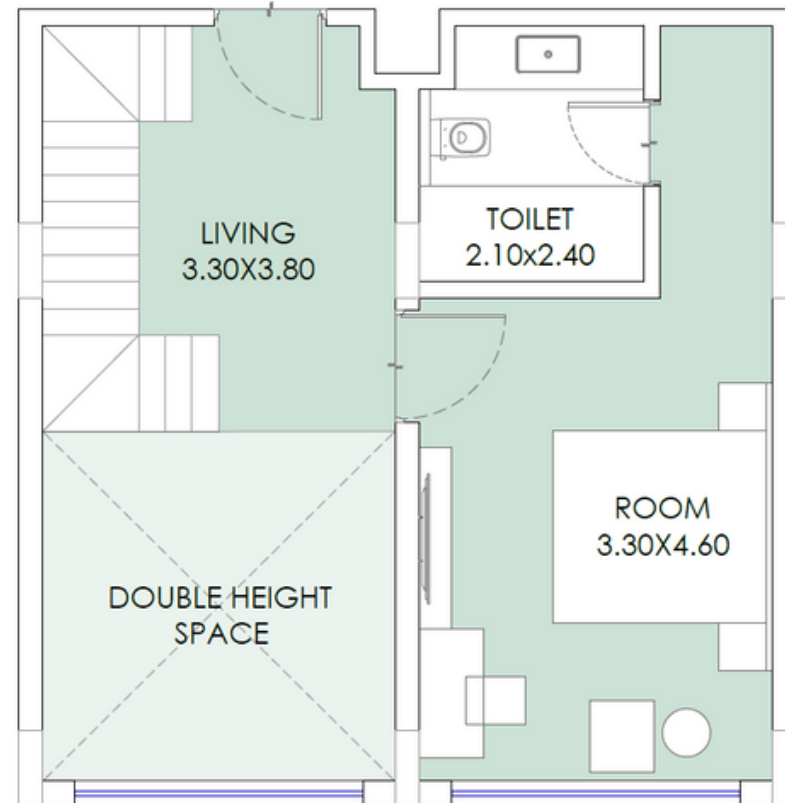
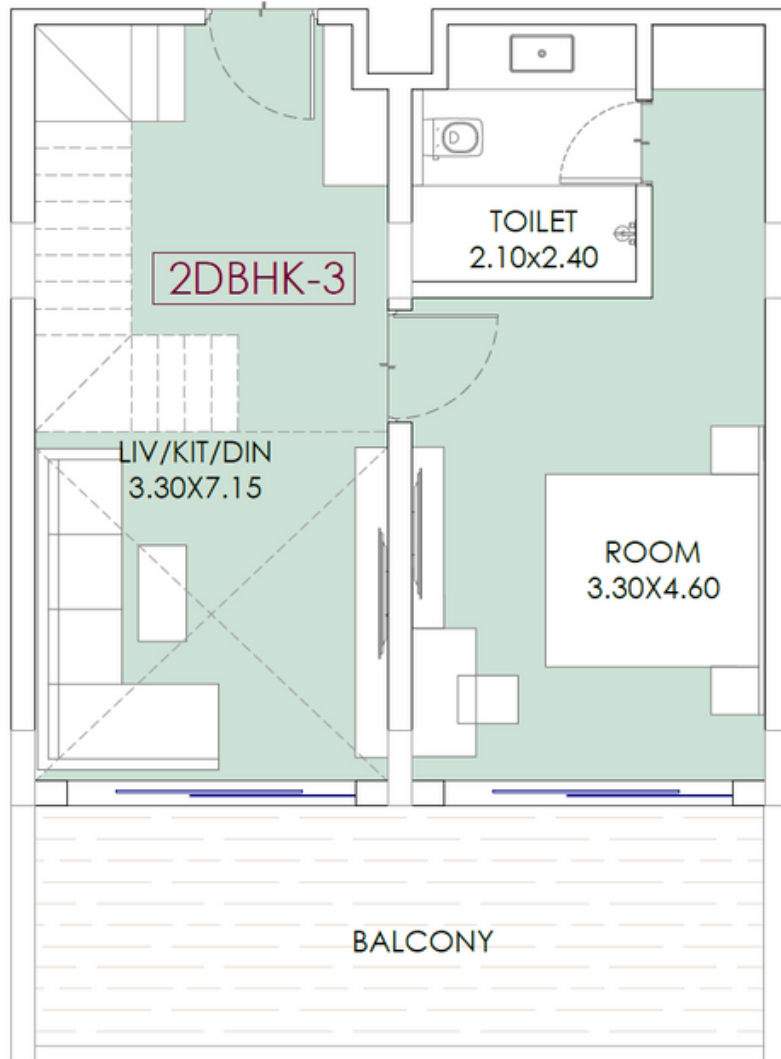


**2DBHK-2**

**Usable Area: 1244.62 sq.ft.**

**Chargeable Area: 1742.46 sq.ft.**

## TWO BHK - DUPLEX (Type3) - TYPICAL LAYOUT



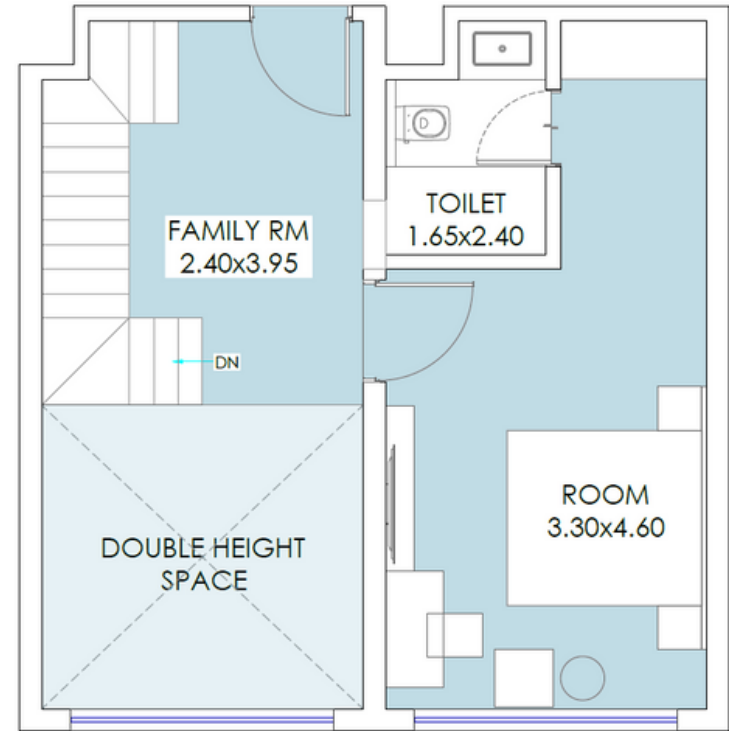
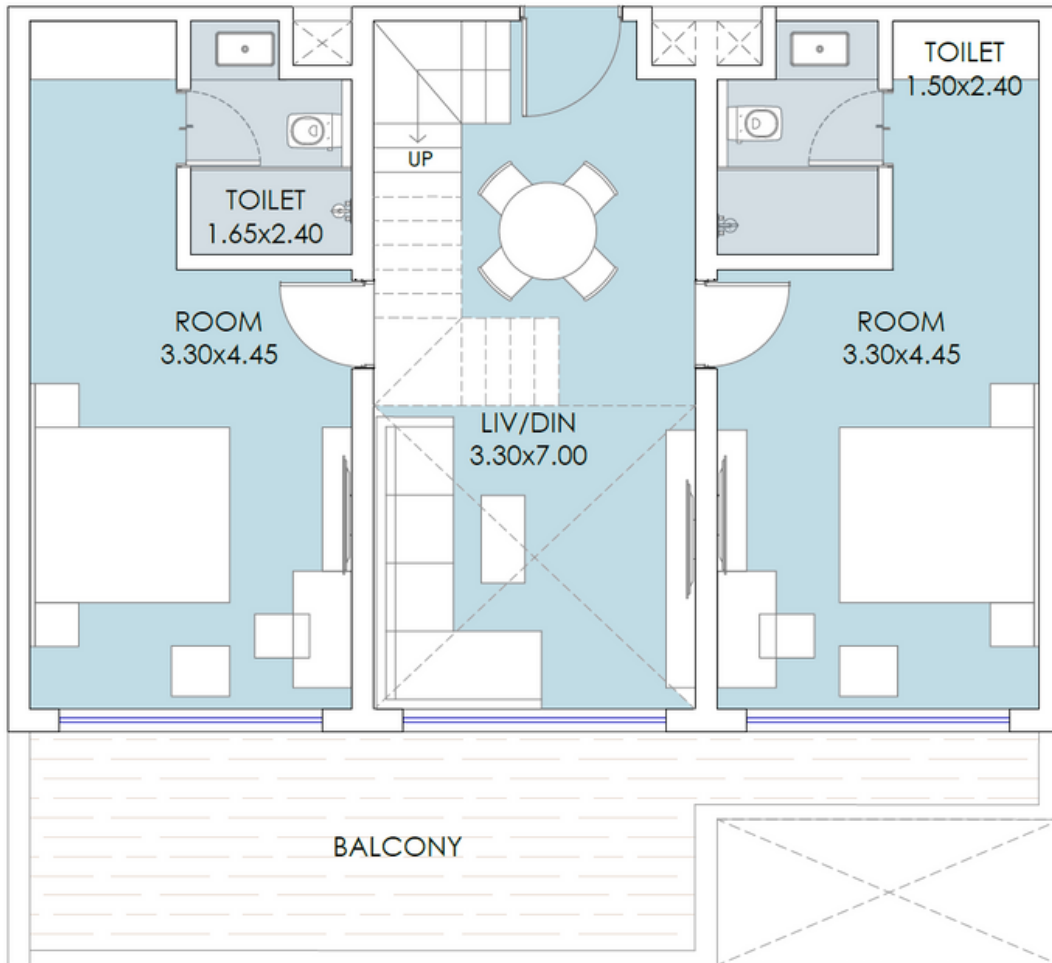
**2DBHK-3**

**Usable Area: 1061.43 sq.ft.**

**Chargeable Area: 1486.00 sq.ft.**



# THREE BHK - DUPLEX - TYPICAL LAYOUT



**3DBHK**

**Usable Area: 1389.19 sq.ft.**  
**Chargeable Area: 1994.86 sq.ft.**



## Call

**+91-9930 219 219**

**+91-9809 219 219**

## Chat With Us



## Instagram



Disclaimer: The information contained in this brochure is subject to change and cannot form part of a legal offer or contract